



2025 CATALOGUE



WEAVER

EQUIPMENT

C O M P L E T E Y O U R R A N G E



A BRAND BY
Cattini
OLEOPNEUMATICA



Cattini

OLEOPNEUMATICA

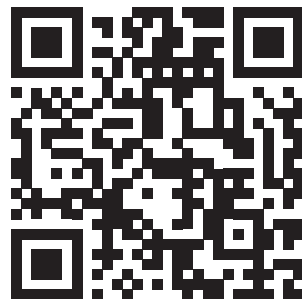


Our jacks have marked their presence over the years thanks to their high reliability and long life, practicality and elegance. Each jack, made with special prime quality materials, is inspected and tested before leaving our factory. Thanks to our high quality products we are the forefront of leading European and non-European markets. Weaver joins our jacks as a complementary range to offer those who choose the Cattini brand everything they need for a safe, easy, fast and environmentally friendly maintenance.

At Cattini, all efforts are made to assure our products meet high quality and durability standards. The WEAVER range is covered by a 12 month warranty, valid from the date appearing on the purchase document. The warranty certificate can be found in the end user manual provided along with the shipment.



C O M P L E T E Y O U R R A N G E



HYDRAULIC BOTTLE JACKS

Our bottle jacks are fully aligned with the European Standards (EN1494:2000+A1:2008) regarding mobile, movable jacks and lifting equipment. The Weaver bottle jacks are projected with an hold-to-run relief valve to warranty the highest safety standards.

Since 1967 we have been studying, designing and testing products to ensure that the operator does not run any risk during the maintenance process of their vehicles. Our passion for creating the most reliable, fastest, easiest-to-use product without sacrificing the highest quality, has been combined with the pleasure of selling and interacting with anyone who trust our company.





WBJ041840

Capacity	Min. height	Max. height	Action	Dimensions	Weight
4 t 4.4 ton	185 mm 7.28 in	405 mm 15.94 in	2 pistons	155 x 145 x 185 mm 6.10 x 5.7 x 7.28 in	6,7 kg 14.7 lb



WBJ121533

Capacity	Min. height	Max. height	Action	Dimensions	Weight
12 t 13.2 ton	150 mm 5.9 in	330 mm 12.99 in	2 pistons	238 x 156 x 150 mm 9.37 x 6.14 x 5.9 in	9,6 kg 21.1 lb



COMPLETE YOUR RANGE



WBJ122554

Capacity	Min. height	Max. height	Action	Dimensions	Weight
12 t 13.2 ton	250 mm 9.84 in	435 mm (+ 105 mm) 17.12 in (+ 4.13 in)	1 piston (+ extension screw)	150 x 145 x 250 mm 5.9 x 5.7 x 9.84 in	8,5 kg 18.7 lb



WBJ152349

Capacity	Min. height	Max. height	Action	Dimensions	Weight
15 t 16.5 ton	230 mm 9.05 in	385 mm (+ 105 mm) 15.15 in (+ 4.13 in)	1 piston (+ extension screw)	155 x 145 x 230 mm 6.1 x 5.7 x 9.05 in	6,7 kg 14.7 lb





WBJ201628



Capacity	Min. height	Max. height	Action	Dimensions	Weight
20 t 22 ton	165 mm 6.49 in	245 mm (+ 40 mm) 9.64 in (+ 1.5 in)	1 piston (+ extension screw)	170 x 160 x 165 mm 6.69 x 6.29 x 6.49 in	8,3 kg 18.2 lb



WBJ202449



Capacity	Min. height	Max. height	Action	Dimensions	Weight
20 t 22 ton	240 mm 9.44 in	395 mm (+ 100 mm) 15.55 in (+ 3.93 in)	1 piston (+ extension screw)	160 x 170 x 240 mm 6.29 x 6.69 x 9.44 in	11,1 kg 24.4 lb

COMPLETE YOUR RANGE



WBJ301627

Capacity	Min. height	Max. height	Action	Dimensions	Weight
30 t	165 mm	235 mm (+ 40 mm)	1 piston (+ extension screw)	170 x 185 x 165 mm	12 kg
33 ton	6.49 in	9.29 in (+ 1.5 in)		6.69 x 7.28 x 6.49 in	26.4 lb



WBJ302550

Capacity	Min. height	Max. height	Action	Dimensions	Weight
30 t	250 mm	400 mm (+ 100 mm)	1 piston (+ extension screw)	170 x 185 x 250 mm	16 kg
33 ton	9.84 in	15.74 in (+ 3.93 in)		6.69 x 7.28 x 9.84 in	13.2 lb





WBJ352752

Capacity	Min. height	Max. height	Action	Dimensions	Weight
35 t 38.5 ton	270 mm 10.62 in	420 mm (+ 100 mm) 16.53 in (+ 3.93 in)	1 piston (+ extension screw)	290 x 195 x 270 mm 11.41 x 6.67 x 10.62 in	21,2 kg 46.78 lb



WBJ502540

Capacity	Min. height	Max. height	Action	Dimensions	Weight
50 t 55.1 ton	250 mm 9.84 in	400 mm 15.74 in	1 piston	270 x 200 x 250 mm 10.62 x 7.87 x 9.84 in	28 kg 61.7 lb



COMPLETE YOUR RANGE

LIFTING BAGS

Our lifting bags, designed for maximum efficiency and safety, range from compact models for precision work to powerful options for lifting heavy loads. Find the ideal solution for your needs and elevate your projects.

Some features of our durable lifting bags:

- Excellent performance.
- User-friendly.
- Strong: cushions made from high-quality compounds with aramid reinforcement.
- Light: the largest cushion 100 x 100 cm, 76T weighs only 24 kg.
- Low maintenance.
- Safe: each lifting cushion is tested before leaving the factory.
- CE marking.
- Standard EN 13731: 2007.
- European production.
- Low profile: largest cushions are only 25 mm thick.





ROUND LIFTING BAGS

Code	Capacity	Max. height	Air volume	Dimensions	Weight
WLB001R08	1 t 1.1 ton	75 mm 2.95 in	0,96 l	140 x 140 x 23 mm 5.51 x 5.51x 0.9 in	0,4 kg 0.8 lb
WLB003R08	3 t 3.3 ton	100 mm 3.93 in	5,16 l	200 x 260 x 23 mm 7.87 x 10.23 x 0.9 in	1 kg 2.2 lb
WLB006R08	6 t 6.6 ton	170 mm 2.75 in	13,3 l	300 x 300 x 23 mm 11.81 x 11.81 x 0.9 in	2 kg 4.4 lb
WLB010R08	10 t 11 ton	210mm 8.26 in	28,3 l	380 x 380 x 23 mm 14.96 x 14.96 x 0.9 in	3,8 kg 8.3 lb
WLB018R08	18 t 19.8 ton	290 mm 11.41 in	66 l	500 x 500 x 23 mm 19.68 x 19.68 x 0.9 in	6,4 kg 14 lb

Working pressure of each lifting bag: 8 bar



COMPLETE YOUR RANGE

ROUND LIFTING BAGS

Code	Capacity	Max. height	Air volume	Dimensions	Weight
WLB027R08	27 t 29.7 ton	360 mm 14.17 in	126,6 l	600 x 600 x 25 mm 23.62 x 23.62 x 0.98 in	9,8 kg 21 lb
WLB037R08	37 t 40.7 ton	420 mm 16.53 in	210 l	700 x 700 x 25 mm 27.55 x 27.55 x 0.98 in	13,5 kg 29 lb
WLB048R08	48 t 52.9 ton	470 mm 18.5 in	315 l	800 x 800 x 25 mm 31.49 x 31.49 x 0.98 in	17,8 kg 39 lb
WLB062R08	62 t 68.3 ton	500 mm 19.68 in	483,3 l	900 x 900 x 25 mm 35.43 x 35.43 x 0.98 in	21 kg 46 lb
WLB076R08	76 t 83.7 ton	590 mm 23.22 in	526,5 l	1000 x 1000 x 25 mm 39.37 x 39.37 x 0.98 in	24,5 kg 52 lb

Working pressure of each lifting bag: 8 bar





FLAT LIFTING BAGS

Code	Capacity	Max. height	Air volume	Dimensions	Weight
WLB023F08	23 t 25.3 ton	220 mm 8.66 in	126 l	600 x 600 x 25 mm 22.83 x 22.83 x 0.98 in	9,8 kg 21.6 lb
WLB033F08	33 t 36.3 ton	220 mm 8.66 in	190 l	700 x 700 x 25 mm 27.55 x 27.55 x 0.98 in	15,5 kg 34.1 lb
WLB048F08	48 t 52.9 ton	220 mm 8.66 in	210 l	800 x 800 x 25 mm 31.49 x 31.49 x 0.98 in	17,8 kg 39.2 lb
WLB062F08	62 t 68.3 ton	220 mm 8.66 in	330 l	900 x 900 x 25 mm 35.43 x 35.43 x 0.98 in	21 kg 46.2 lb
WLB072F08	72 t 79.3 ton	220 mm 8.66 in	370 l	1000 x 1000 x 25 mm 39.37 x 39.37 x 0.98 in	24,5 kg 54 lb

Working pressure of each lifting bag: 8 bar



COMPLETE YOUR RANGE

LIFTING BAGS ACCESSORIES

We offer a choice of accessories compatible with our lifting bags to ensure an even safer and more productive workflow.



WLBA101S

Single output remote control
8 bar

WLBA102D

Dual output remote control
8 bar



WLBA201S

Shut Off Valve



WLBA301Y

5 m yellow hose
25 bar

WLBA302Y

10 m yellow hose
25 bar

WLBA301R

5 m red hose
25 bar

WLBA302R

10 m red hose
25 bar

WLBA301B

5 m blue hose
25 bar

WLBA302B

10 m blue hose
25 bar

STABILITY SOLUTIONS

Weaver outrigger pads are strong, rigid and easy equipment made of engineered thermoplastic material. These pads spread the weight over a larger surface offering better support while also protecting the surface.

This table allows you to calculate the maximum load applicable on a certain ground without sinking.

Increasing the size of the pad increases the load bearable without sinking.

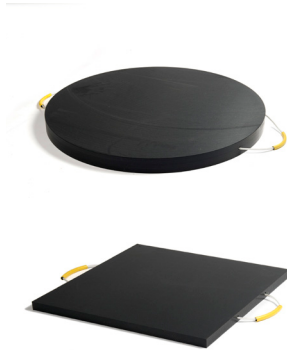
For example: a 400x400 pad on hard clay soil ($0.4 \text{ N} / \text{mm}^2$) starts sinking at $400 \times 400 \times 0.4 = 64000 \text{ N} = 6.5 \text{ t}$.

A 600x600 pad on the same ground instead begins to sink at $600 \times 600 \times 0.4 = 14.7 \text{ t}$.

TYPE OF FOUNDATION	MAXIMUM ALLOWED BURDEN	
	N/mm ²	psi
Sand	0,05 ÷ 0,3	7,2 ÷ 43,5
Gravel	0,3 ÷ 0,4	43,5 ÷ 58
Clay soil	0,04 ÷ 0,4	5,8 ÷ 58
Rock formation	1 ÷ 3	145 ÷ 435
Regular concrete	10 ÷ 40	1450 ÷ 5800

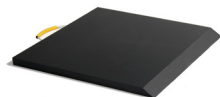


PADS



Code	Max capacity	Size	Weight
M-SP0300180-01	180 t 198 ton	300 x 300 x 30 mm 11.8 x 11.8 x 1.1 in	2,5 kg 5.5 lb
M-SP0300320-01	200 t 220 ton	400 x 400 x 30 mm 15.7 x 15.7 x 1.1 in	4,5 kg 9.9 lb
M-SP040010-01	200 t 220 ton	400 x 400 x 40 mm 15.7 x 15.7 x 1.5 in	6 kg 13.2 lb
M-SP060015-01	200 t 220 ton	400 x 400 x 60 mm 15.7 x 15.7 x 2.3 in	9 kg 19.8 lb
M-SP080020-01	200 t 220 ton	400 x 400 x 80 mm 15.7 x 15.7 x 3.1 in	12 kg 26.4 lb
M-SP0400040-01	200 t 220 ton	500 x 500 x 40 mm 19.6 x 19.6 x 1.5 in	9 kg 19.8 lb
M-SP050050-01	200 t 220 ton	500 x 500 x 50 mm 19.6 x 19.6 x 1.9 in	12 kg 26.4 lb
M-SP060020-01	200 t 220 ton	550 x 550 x 60 mm 19.6 x 19.6 x 2.3 in	17 kg 37.4 lb
M-SP040020-01	200 t 220 ton	600 x 600 x 40 mm 23.6 x 23.6 x 1.5 in	14 kg 30.8 lb
M-SP0500720-01	200 t 220 ton	600 x 600 x 50 mm 23.6 x 23.6 x 1.9 in	17 kg 37.4 lb

PADS

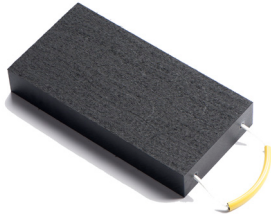


M-SP040025-01

Code	Max capacity	Size	Weight
M-SP060025-01	200 t 220 ton	600 x 600 x 60 mm 23.6 x 23.6 x 2.3 in	20 kg 44 lb
M-SP040025-01 with ramp	200 t 220 ton	600 x 1000 x 40 mm 23.6 x 39.3 x 1.5 in	23 kg 50.7 lb
M-SP060035-01	200 t 220 ton	800 x 800 x 60 mm 31.4 x 31.4 x 2.3 in	37 kg 81.5 lb
M-SP0602000-01	200 t 220 ton	1000 x 1000 x 60 mm 39.3 x 39.3 x 2.3 in	58 kg 127.8 lb
M-SP0802000-01	200 t 220 ton	1000 x 1000 x 80 mm 39.3 x 39.3 x 3.1 in	78 kg 171.9 lb
M-RP060040-01	200 t 220 ton	Ø 1000 x 60 mm Ø 39.3 x 2.3 in	46 kg 101.4 lb

COMPLETE YOUR RANGE

STACK PADS



Code	Max capacity	Size	Weight
M-STP805	25 t 198 ton	500 x 250 x 80 mm 19.6 x 9.8 x 3.1 in	10 kg 22 lb
M-SP8010	25 t 352 ton	1000 x 250 x 80 mm 39.3 x 9.7 x 3.1 in	19 kg 42 lb

Stack pads are often used in combination with other pads. Stack several pads allows to reach the requested height which would not be reachable with a normal outrigger pad. This will result in constructions of 2-3 levels to reach the desired height.

Stack pads have a standard 2-sided anti-slip finishing.

STABILITY BLOCKS



Code

Max compression

Size

Weight

M-SBB0060

3 N/mm²

448 x 140 x 140 mm
17.6 x 5.5 x 5.5 in

8 kg
17 lb

M-SBB0061

3 N/mm²

174 x 140 x 140 mm
46.2 x 5.5 x 5.5 in

17 kg
37 lb

Suggestions:

- always set up a full layer at the base.
- use our top/bottom pads in order to have a better weight distribution.

Some examples of possible structures:

3+2 Max load*: 20 t



3+3 Max load*: 45 t



8+6 Max load*: 180 t



8+8 Max load*: 320 t



* The maximum load is calculated under conditions of uniform load distribution over the entire surface and the pad placed on a flat, smooth surface with a compressive strength greater than 20 N / mm² (e.g. concrete).

COMPLETE YOUR RANGE

TOP/BOTTOM BLOCKS



Code

Size

Weight

M-SBB0040

1200 x 1200 x 80 mm
47.2 x 47.2 x 3.1 in

100 kg
220 lb

M-SBB0050

500 x 500 x 60 mm
19.6 x 19.6 x 2.3 in

12 kg
26 lb

WEDGE PADS



Code

Size

Weight

M-SBB0030

400 x 120 x 120 mm
17.5 x 4.7 x 4.7 in

3 kg
6.6 lb



CE EAC



W25.1.0



CATTINI OLEOPNEUMATICA S.r.l.
VIA G. VERDI, 41 - Z.I. Vecchia Puglia
42043 GATTATICO (RE) - ITALY
PH.+39 0522 909750 - info@cattini.eu
www.cattini.eu

